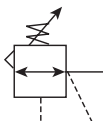


54R Regulators – Relieving

- Balanced poppet design
- Non-rising, pressure-adjusting dial
- High-relief flow (3/16" relief orifice)
- Two 1/4" gauge ports
- Constant bleed, piston operated
- 1-1/2", 2" ports (NPT, BSPP)



Port Size	Description	Part Number
1-1/2"	Standard Pressure 5 to 160 psig (0.34 to 11 bar)	54R726RA
1-1/2"	Low Pressure 2 to 40 psig (0.14 to 3 bar)	54R725RA
2"	Standard Pressure 5 to 160 psig (0.34 to 11 bar)	54R826RA
2"	Low Pressure 2 to 40 psig (0.14 to 3 bar)	54R825RA

Operating information

Adjusting pressure range:	2 to 40 psig (0 to 2.8 bar) 5 to 160 psig (0 to 11.0 bar)
Bleed Rate:	0.05 scfm (0.02 dm³/s, ANR)
Operating temperature (max):	32°F to 150°F (0°C to 65.6°C)
Supply pressure (max):	300 psig (20.7)
Flow capacity†:	1-1/2" 1,600 scfm (755 dm³/s, ANR) 2" 1,600 scfm (755 dm³/s, ANR)
Gauge ports:	Two ports 1/4" (can be used as additional high flow 1/4 inch outlet ports)
Weight:	9 lb (4.1 kg)
† scfm = Inlet pressure 100 psig (6.9 bar) inlet. Secondary pressure 80 psig (5.5 bar).	

Ordering Information:

54R	7	26	R	A																							
<table><tr><th colspan="2">Port Size</th></tr><tr><td>1-1/2 inch</td><td>7</td></tr><tr><td>2 inch</td><td>8</td></tr></table>	Port Size		1-1/2 inch	7	2 inch	8	<table><tr><th colspan="2">Springs</th></tr><tr><td>2 to 40 psig</td><td>25</td></tr><tr><td>5 to 160 psig</td><td>26</td></tr></table>	Springs		2 to 40 psig	25	5 to 160 psig	26		<table><tr><th colspan="2">Engineering Level</th></tr><tr><td>A</td><td>Current</td></tr></table>	Engineering Level		A	Current	<table><tr><th colspan="2">Thread Type</th></tr><tr><td>Blank</td><td>NPT</td></tr><tr><td>1</td><td>BSPP</td></tr></table>	Thread Type		Blank	NPT	1	BSPP	
Port Size																											
1-1/2 inch	7																										
2 inch	8																										
Springs																											
2 to 40 psig	25																										
5 to 160 psig	26																										
Engineering Level																											
A	Current																										
Thread Type																											
Blank	NPT																										
1	BSPP																										
			<table><tr><th colspan="2">Relief</th></tr><tr><td>R</td><td>Relieving</td></tr></table>	Relief		R	Relieving																				
Relief																											
R	Relieving																										

Most popular.



For inventory, lead times, and kit

K48

Parker Hannifin Corporation
Pneumatic Division

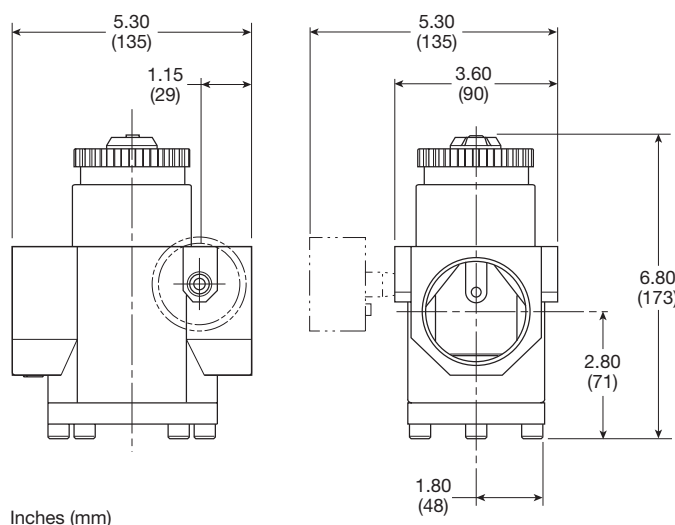
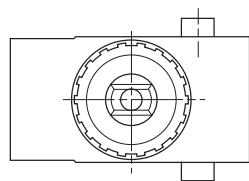
Semi-Precision Regulators

Material Specifications

Body	Zinc
Bonnet	Zinc / brass
Piston	Zinc
Seals	Nitrile
Springs	Steel
Valve assembly	Brass / nitrile / acetal

Repair and Service Kits

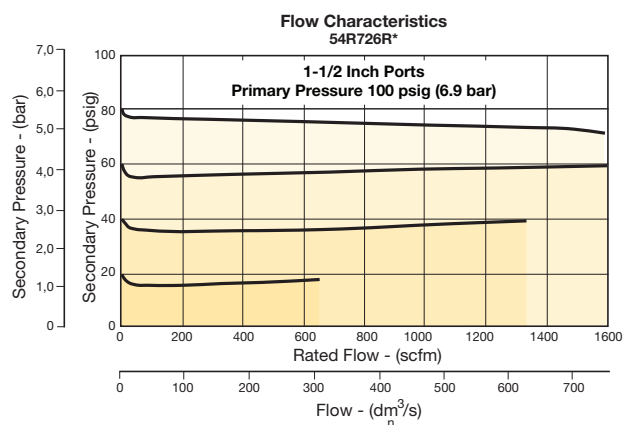
Adjustment dial knob	RRP-16-024
O-ring, repair kit	GRP-95-262
Piston, bottom and o-ring seal	RRP-95-192
Pistons and bonnet repair kit	RRP-95-766
Spring, regulation, belleville washer – 2 to 40 psig range	RRP-95-906
Spring, regulation, belleville washer – 5 to 160 psig range	RRP-95-905
Spring, main valve	RRP-95-024
Tamper resistant kit	RRP-95-585
Valve, main with o-ring seal	RRP-95-153
Valve, pilot with o-ring and valve spring	RRP-96-935



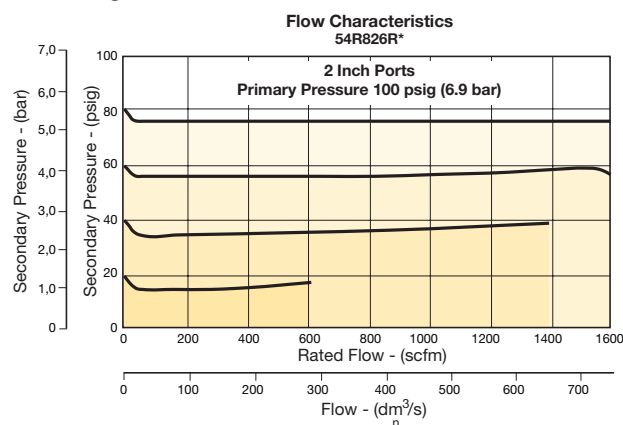
Regulator Products

Flow Charts

54R 1-1/2" Regulator



54R 2" Regulator



WARNING

Product rupture can cause serious injury.
Do not connect regulator to bottled gas.
Do not exceed Maximum primary pressure rating.



For inventory, lead times, and kit

K49

Parker Hannifin Corporation
Pneumatic Division

General

Dial

Pilot

Proportional

Precision

Water

K

Regulator
Products